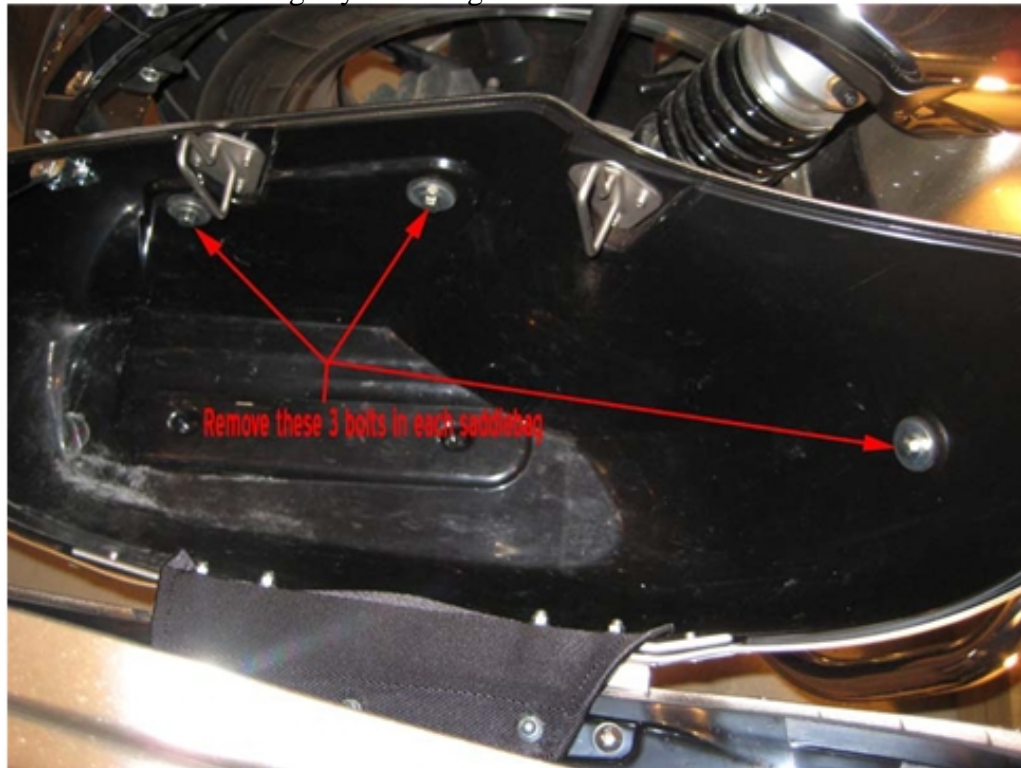


Kawasaki Voyager 1700 McHitch Installation

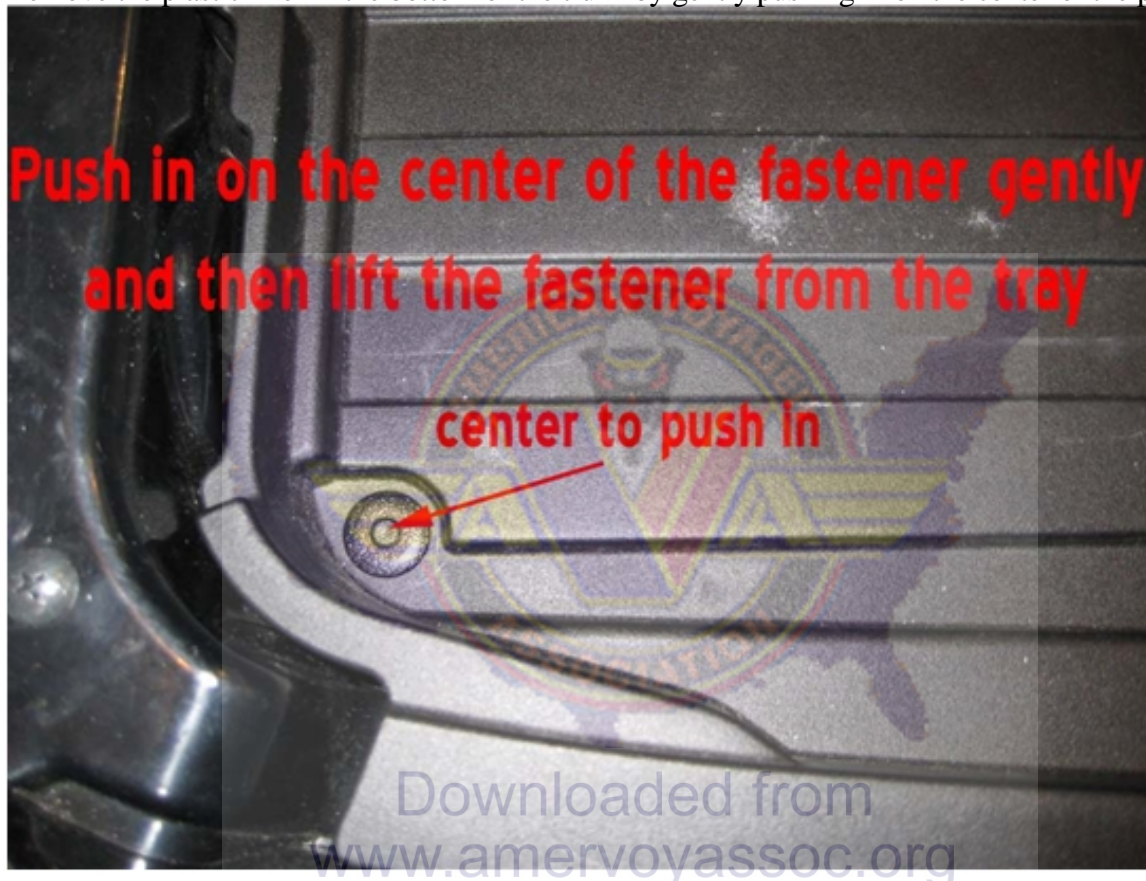
By Bob Silvano

Remove the seat.

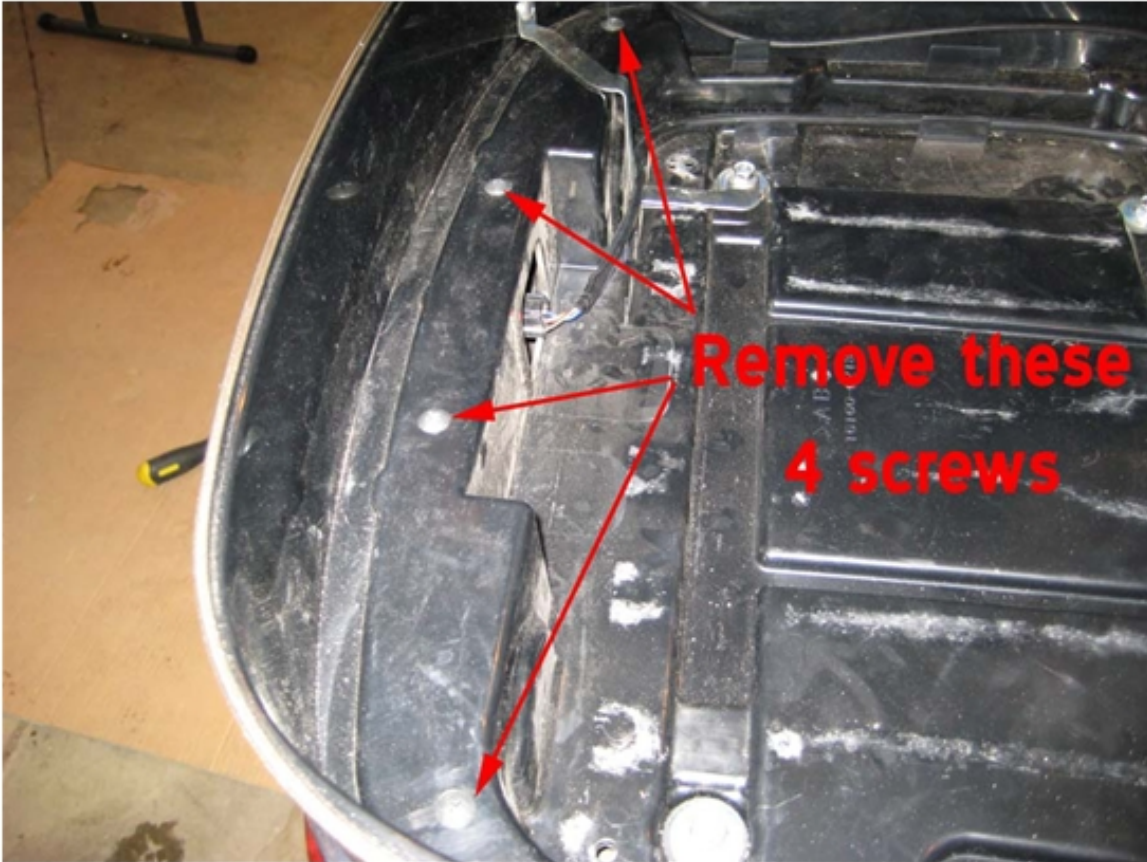
Remove both saddlebags by removing the 3 bolts shown below



Remove the plastic liner in the bottom of the trunk by gently pushing in on the center of the plastic clips



Once the liner is removed remove the trunk rear light assembly by removing the 4 black screws inside the trunk and 4 on the bottom side of the light assembly.



Unplug the light assembly and set it aside.



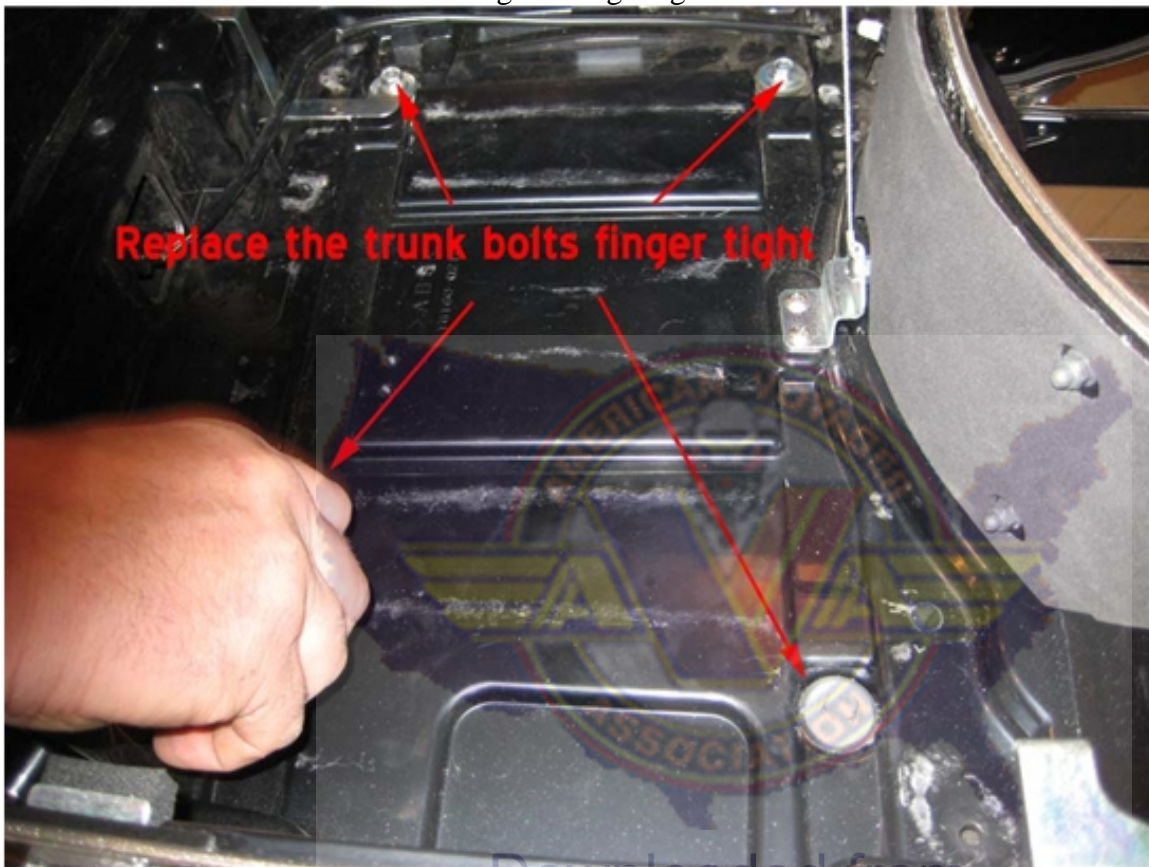
Remove the bolts for the trunk



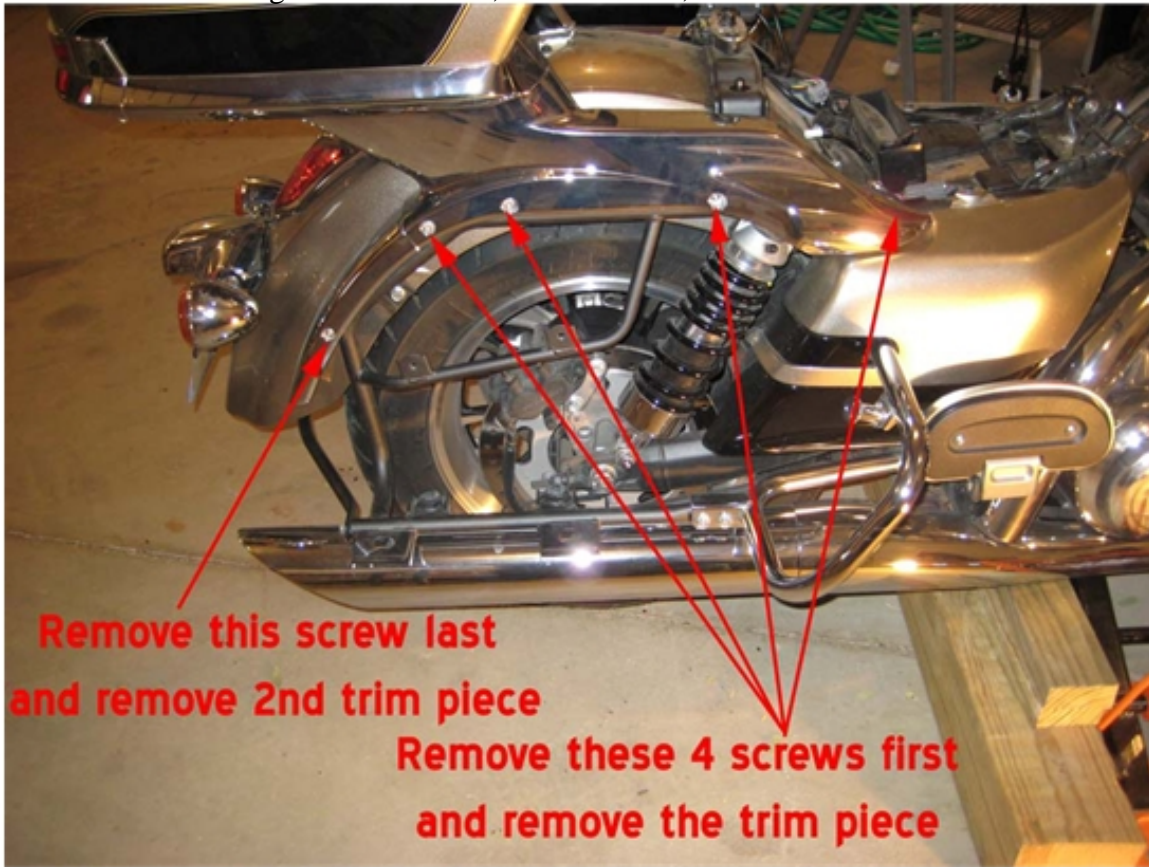
Have a friend hold the trunk up and remove the 4 screws (two on each side) for the side trim



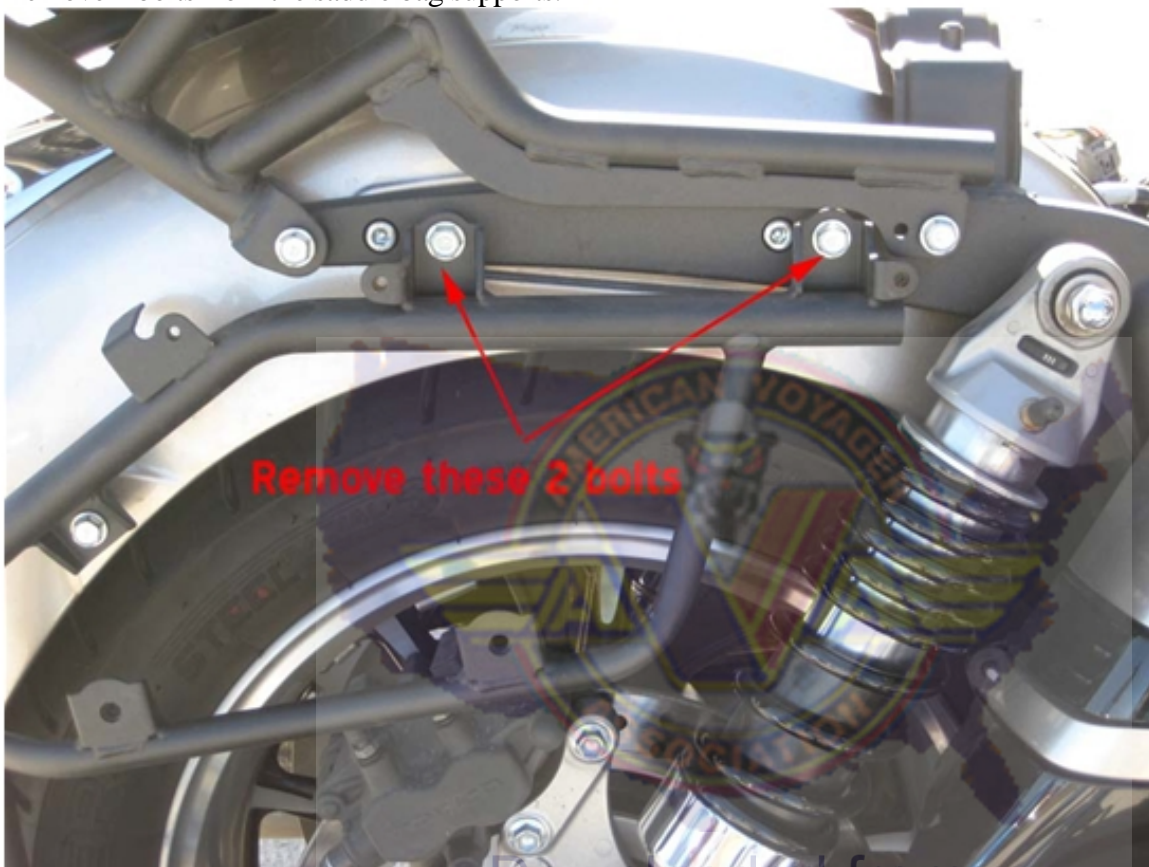
Put the bolts back inside the trunk and tighten finger tight to make sure it does not fall.



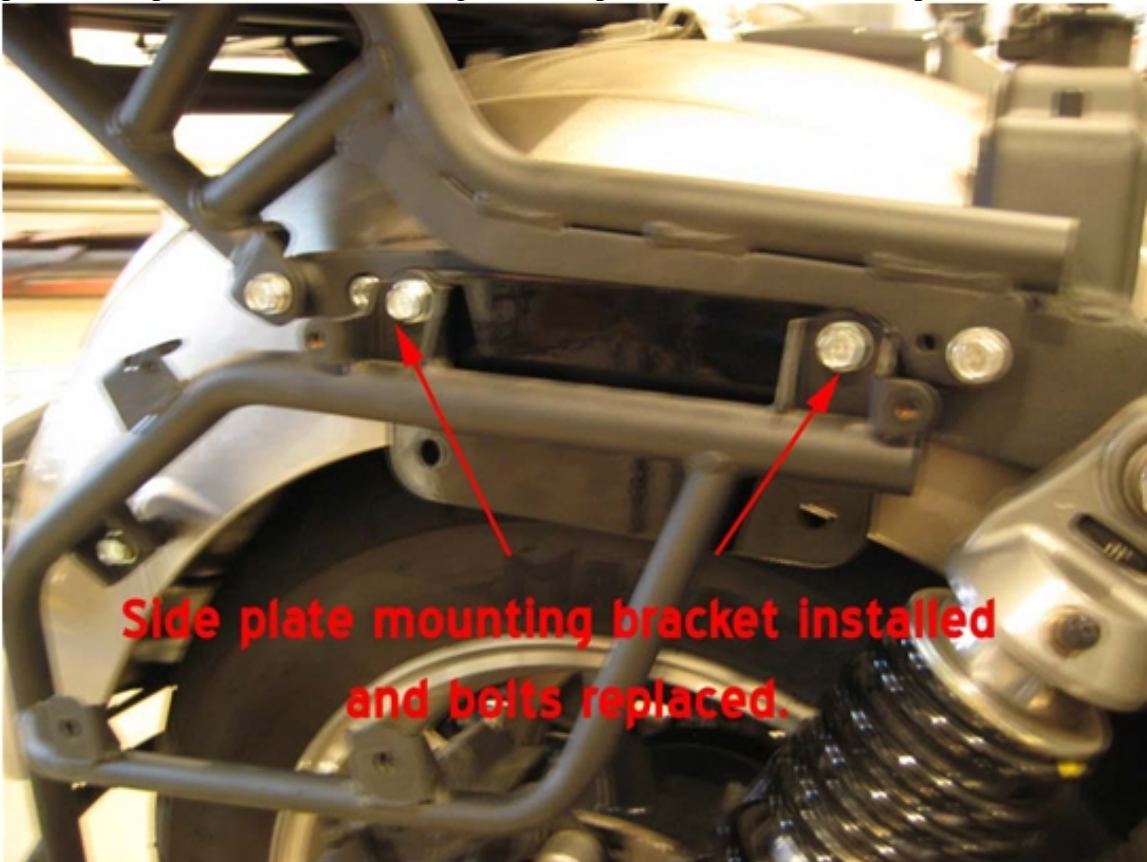
Remove the remaining side trim screws, 5 on each side, and remove the side trim and set it aside



Remove 2 bolts from the saddle bag supports.



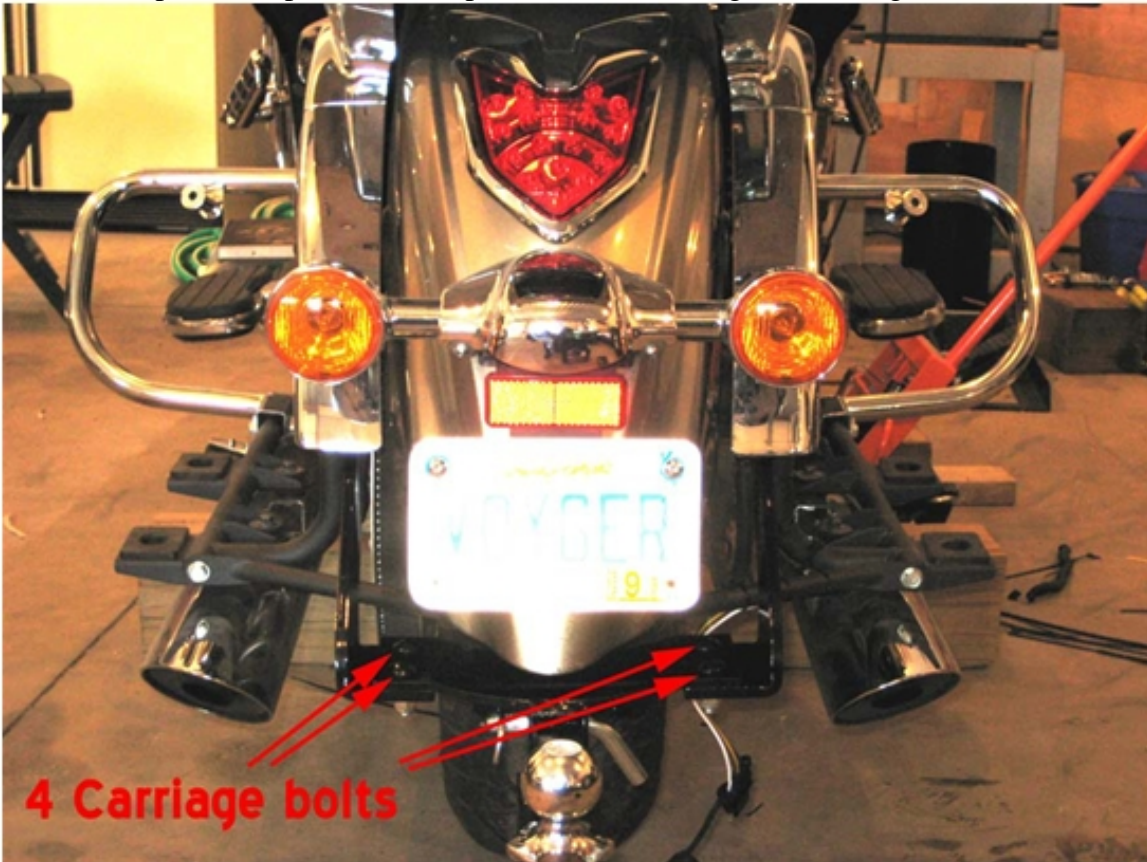
Place the side plate mounting bracket behind the saddlebag supports and replace the two bolts you removed in the previous step. (We recommend using a few drops of Loctite). Do this step for both sides of the bike.



Place the side plate behind the mounting bracket and attach the side plates to the mounting brackets with the two bolts supplied with the hitch (We recommend using Loctite on this step) Repeat this step for both sides of the bike.



Set the base plate on top of the 2 side plates and attach using the 4 carriage bolts, washers and locking nuts



Now is the time to double check that all bolts are tight.

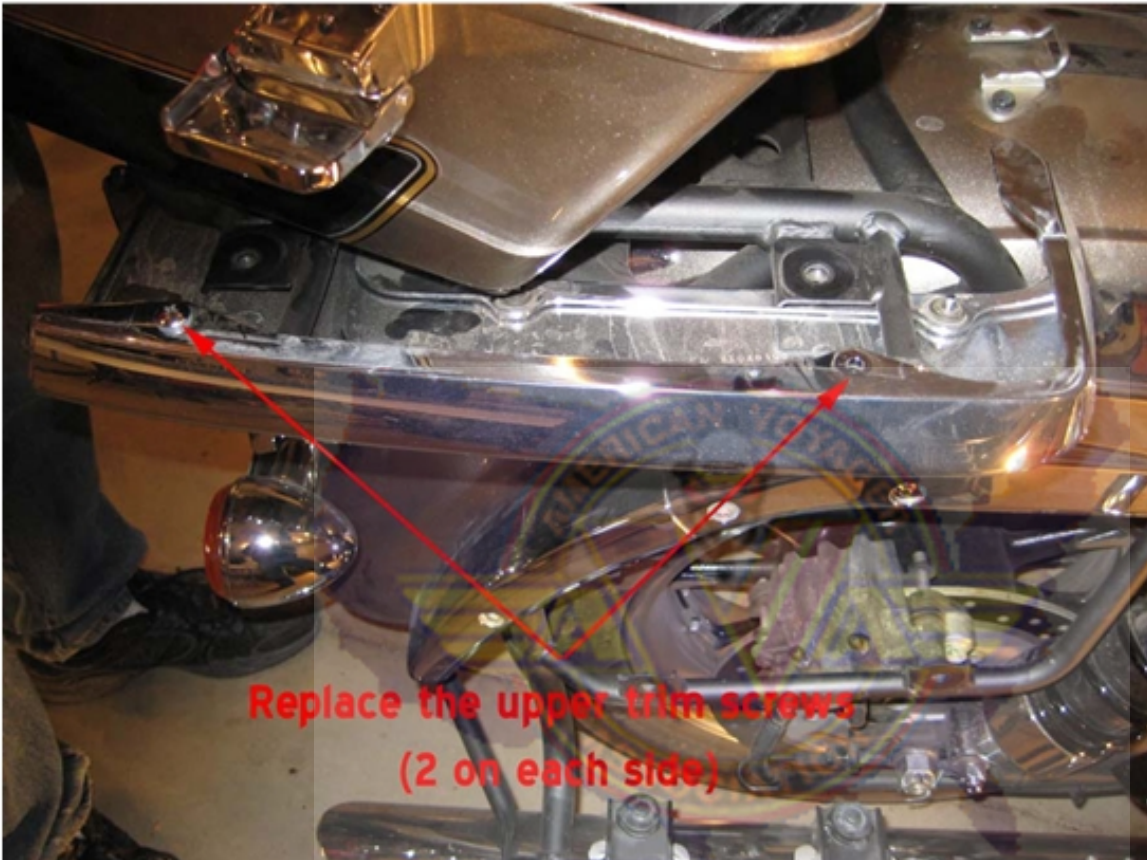
Replace the lower piece of side trim and attach with 1 screw (Repeat for both sides of the bike).



Replace remaining side trim and replace the 4 screws for each side



Remove the 4 bolts inside the trunk that you hand tightened earlier and replace the 4 upper side trim screws.

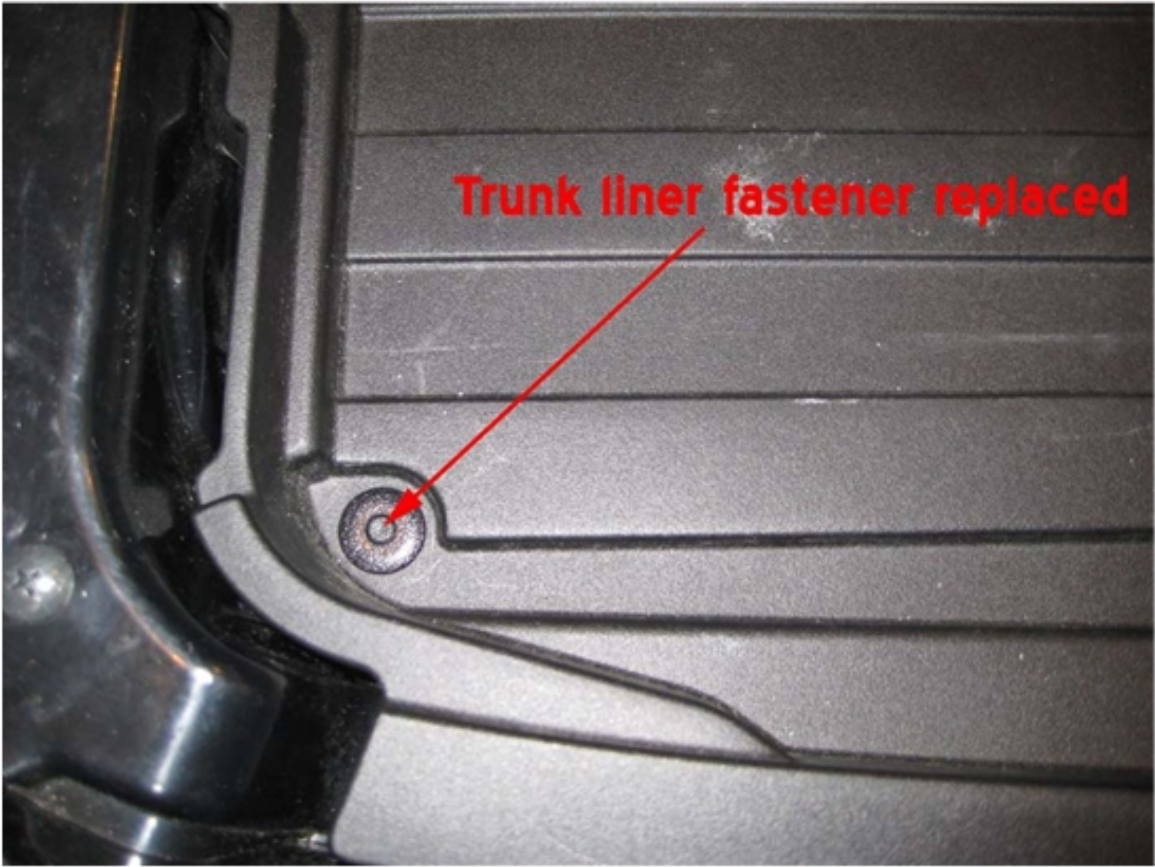


Replace the 4 bolts inside the trunk and hand tighten. Plug in the light assembly for the back of the trunk. Replace the light assembly with for black screws inside the trunk and 4 under the light assembly.



Now tighten the 4 bolts inside the trunk that you hand tightened earlier. Replace the trunk liner. Makes sure the center pins of the fasteners are pulled up, place in the hole, then gently push the center pin in until you hear or feel a slight click.





Replace the saddle bags using the 3 bolts you removed earlier. And repeat for the other side.



Replace the seat.

Install the ball mount tube using the supplied ½ inch bolt, nut and cotter pin for safety.

We recommend using a couple of ¾” wrenches to tighten the nut until all receiver rattle is gone

And then place the cotter pin in the hole for safety. Attach your ball to the ball mount tube and your hitch is complete. They also supply a black square plug to put in place when your ball mount tube is not installed.



Downloaded from
www.amervoyassoc.org