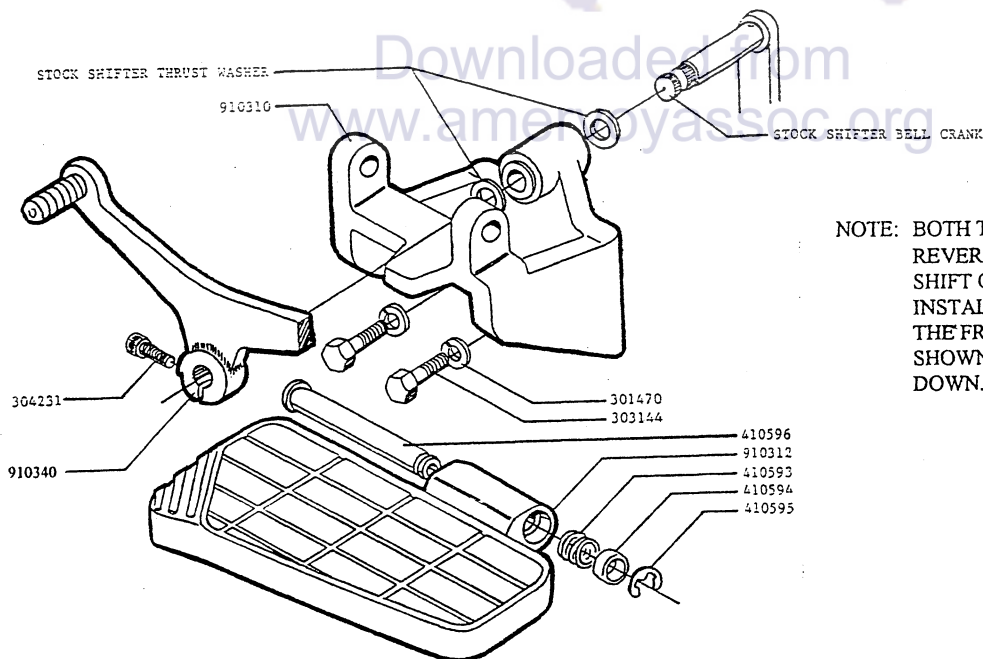


## VOYAGER XII DRIVER FLOORBOARDS K53002-015B

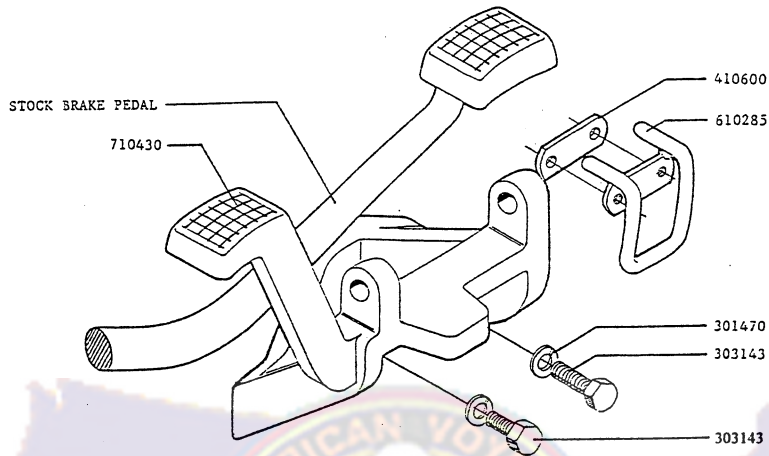
QTY	P/N	DESCRIPTION
2	303143	8 x 1.25 x 30mm HEX HEAD CAP SCREW, PLATED
2	303144	8 x 1.25 x 35mm HEX HEAD CAP SCREW, PLATED
4	301470	5/16" SPLIT LOCKWASHER, PLATED
2	410596	FLOORBOARD PIVOT PIN
2	410595	PIVOT PIN E-CLIP
2	410594	PIVOT SPRING COLLAR
2	410593	PIVOT SPRING
2	304223	10-24 x 5/8" SOCKET HEAD CAP SCREW, PLATED
1	410600	FOOT GUARD MOUNT BRACKET, PLATED
1	610285	FOOT GUARD WELDMENT, CHROME
1	910340	ZG1200 SHIFTER ASSEMBLY
1	910310	ZG1200 LH SUPPORT ASSEMBLY
1	710430	ZG1200 RH SUPPORT ASSEMBLY
1	910312	LH FLOORBOARD ASSEMBLY
1	910313	RH FLOORBOARD ASSEMBLY
1	304231	1/4-20 x 3/4" SOCKET HEAD CAP SCREW, PLATED
1	304251	3/16" HEX KEY

1. PLACE YOUR MOTORCYCLE ON ITS CENTERSTAND. REMOVE THE STOCK SHIFT LEVER, BRAKE PEDAL AND FOOTPEGS. SET THESE ITEMS ASIDE FOR NOW.
2. REMOVE THE LARGE CHROME PANEL LOCATED JUST FORWARD OF THE LH SIDE COVER. REMOVE THE BEVEL DRIVE COVER FROM THE LEFT SIDE OF THE ENGINE (FASTENED WITH FOUR 6mm BOLTS) AND SET IT ASIDE. REMOVE THE SHIFTER BELL CRANK FROM THE SHIFT SHAFT, ROTATE IT 180°, AND REINSTALL. TIGHTEN THE BELL CRANK BOLT TO 52-69 IN/LBS. REINSTALL THE BEVEL DRIVE COVER, TIGHTEN TO 52-69 IN/LBS, AND THEN REINSTALL THE CHROME PANEL.
3. SLIDE ONE OF THE TWO STOCK THRUST WASHERS ONTO THE LOOSE BELL CRANK. AND THEN SLIDE THE SHIFT SHAFT THROUGH THE BUSHINGS IN THE LEFT HAND FLOORBOARD SUPPORT AS SHOWN. USING THE 8 x 35mm BOLTS AND 5/16" LOCKWASHERS FASTEN THE LEFT HAND SUPPORT TO THE FRAME. TIGHTEN THESE BOLTS TO 10-13.5 FT/LBS.
4. SLIDE THE SECOND STOCK THRUST WASHER ONTO THE SHIFT SHAFT, AND THEN INSTALL THE HEEL-TOE SHIFTER, USING THE 1/4 x 3/4" ALLEN BOLT PROVIDED. MAKE SURE THAT THE SHIFTER DOES NOT HIT THE FLOORBOARD SUPPORT DURING UP OR DOWN SHIFTING, AND SECURELY TIGHTEN THE ALLEN BOLT.



NOTE: BOTH THE BELL CRANKS ARE REVERSED 180° FOR PROPER SHIFT OPERATION. WHEN INSTALLING FLOORBOARDS, THE FRONT POINTS UP AS SHOWN AND THE REAR POINTS DOWN.

5. FASTEN THE RIGHT HAND SUPPORT TO THE FRAME USING THE REMAINING 8 x 30mm BOLTS AND 5/16" LOCKWASHERS. USE THE (2) 8x30mm BOLTS. TIGHTEN THESE BOLTS TO 10-13.5 FT/LBS.
6. FASTEN THE FOOT GUARD TO THE UNDERSIDE OF THE BRAKE PEDAL PAD, USING THE MOUNT AND 10-24 ALLEN BOLTS PROVIDED. NEST THE TWO LOOP ENDS AGAINST THE BOTTOM OF THE PAD, AND THEN SECURELY TIGHTEN THE TWO ALLEN BOLTS.

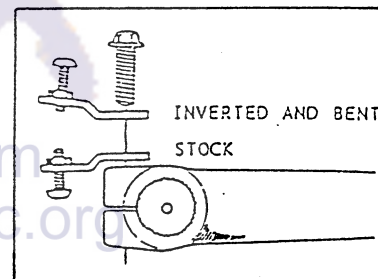


7. REINSTALL THE BRAKE PEDAL TWO SPLINES UP FROM THE ORIGINAL POSITION (THE STOCK POSITION IS MARKED WITH A SMALL DOT ON PEDAL AND SHAFT) AND FASTEN WITH THE STOCK 8mm BOLT. TIGHTEN TO 10-13.5 FT/LBS.

NOTE: THE GOAL FOR BRAKE PEDAL AT REST POSITION IS TO HAVE THE ARM CLEAR THE CLUTCH COVER BY ABOUT 1 mm. NORMALLY, THIS CAN BE ACCOMPLISHED BY INSTALLATION OF THE PEDAL ARM 2 SPLINES "UP" ON THE SHAFT, WITH POSSIBLE ADJUSTMENT NECESSARY TO THE MASTER CYLINDER CLEVIS (PAGE 11-8 IN THE SERVICE MANUAL) TO 5 mm INSTEAD OF 4-5mm.

IF, DUE TO TOLERANCE BUILDUP, THIS BRAKE PEDAL POSITION CANNOT BE ACCOMPLISHED WITH THE ARM IN THE 2 SPLINES POSITION, IT MAY BE NECESSARY TO POSITION IT AT ONE SPLINE UP AND ADJUST THE CLEVIS AS NECESSARY TO POSITION IT AT APPROXIMATELY 1 mm CLEARANCE FROM THE CLUTCH COVER.

NOTE: ON VOYAGER MODELS WITH CRUISE CONTROL, THE SMALL TAB WITH ADJUSTING SCREW THAT ATTACHES TO THE BRAKE PEDAL MUST BE INVERTED AS SHOWN (THE TAB SHOULD BE BENT UP SLIGHTLY AFTER REINSTALLATION TO ENSURE SWITCH CONTACT WHEN THE PEDAL IS DEPRESSED).



8. FASTEN THE FLOORBOARDS TO THE SUPPORTS, USING THE PIVOT PINS, SPRINGS, COLLARS, AND E-CLIPS PROVIDED. THESE BOARDS INSTALL IN THE SAME MANNER AS THE STOCK PASSENGER BOARDS SO YOU MAY REFER TO THEM FOR PROPER ASSEMBLY. DOUBLE CHECK ALL NUTS AND BOLTS FOR PROPER TIGHTNESS. AND INSTALLATION IS COMPLETE.

**BE SURE THAT THE RIDER IS AWARE THAT USE OF FLOORBOARDS CHANGES THE OPERATING FEEL AND CHARACTERISTICS OF THE MOTORCYCLE, DUE TO FOOT AND CONTROL POSITION CHANGES. BEFORE OPERATING THE MOTORCYCLE, BE SURE THAT THE BRAKE PEDAL AND SHIFT PEDAL MOVE FREELY AND WITH NO INTERFERENCE WITH OTHER PARTS. BE SURE THAT MAXIMUM BRAKING FORCE CAN BE ACHIEVED. IF BRAKE ADJUSTMENTS NEED TO BE MADE, CONTACT AN AUTHORIZED KAWASAKI DEALER. CHECK BRAKE OPERATION PERIODICALLY, ACCORDING TO YOUR OWNERS MANUAL.**