

# Kawasaki Motors Corp., U.S.A.

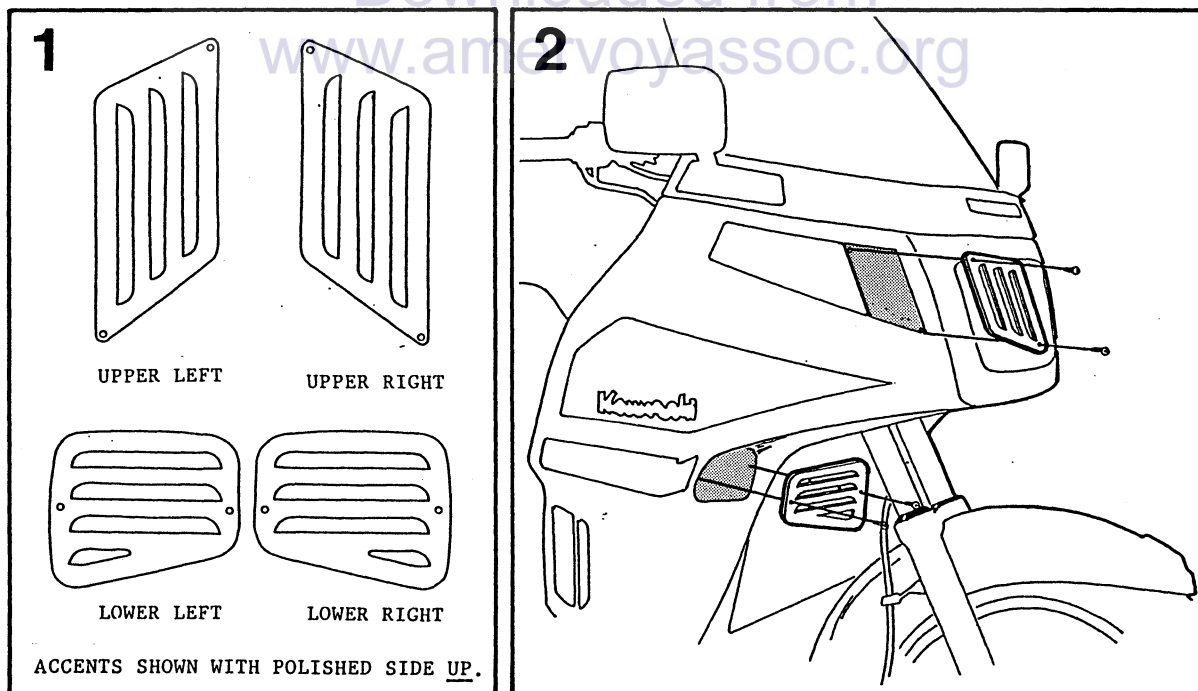
Irvine, California 92718-2016

VOYAGER XII FAIRING VENT ACCENT SET PN K53002-023

QTY	PN	DESCRIPTION
9	304509	#2 x 3/8" PHILLIPS PANHEAD SELF-TAPPING SCREW, PLATED
1	470985	UPPER VENT ACCENT LH, CHROME
1	470990	UPPER VENT ACCENT RH, CHROME
1	470995	LOWER VENT ACCENT LH, CHROME
1	471000	LOWER VENT ACCENT RH, CHROME

NOTE: PLEASE READ ALL INSTRUCTIONS BEFORE STARTING INSTALLATION.

1. PLACE YOUR MOTORCYCLE ON ITS CENTERSTAND. LAY THE FOUR VENT ACCENTS OUT AND DETERMINE WHICH VENTS ARE UPPER AND LOWER, AS WELL AS LEFT AND RIGHT. SEE FIGURE ONE.



2. POSITION THE PROPER ACCENT PLATE ON THE UPPER LEFTHAND FAIRING VENT. USING THE MOUNT HOLES IN THE ACCENT AS A GUIDE, DRILL A 1/16" HOLE AT EACH MOUNT POSITION. USING TWO OF THE #2 SCREWS PROVIDED, FASTEN THE ACCENT PLATE TO THE STOCK VENT. BE CAREFUL NOT TO OVERTIGHTEN THESE SCREWS; SINCE THEY ARE SELF-TAPPING SCREWS, THEY NEED ONLY BE SNUG.
3. REPEAT STEP TWO FOR THE UPPER RIGHTHAND ACCENT AND THE LEFT AND RIGHT LOWER ACCENT PLATES. INSTALLATION IS NOW COMPLETE.

JUNE 1987 070167

## ACCESSORIES

FORM 65A001-00A